

## WHAT IS GREEN CARE?

Green Care refers to professional, responsible and goal-oriented utilisation of methods based on the environment in education, wellbeing or social and health care services.

Green Care operations often take place in nature or on a farm, but plants and materials from nature as well as animals can also be applied in an urban environment or a nursing institution.

## IN WHICH SERVICES CAN GREEN CARE BE USED?

Examples of sectors in which Green Care operating methods can be applied include rehabilitation, services for children and adolescents, care of the elderly, day care, care of substance abusers or people with mental health problems, services for special groups and activities aimed at increased wellbeing at work.

## GREEN CARE LABELS

Wellbeing and high-quality services from nature



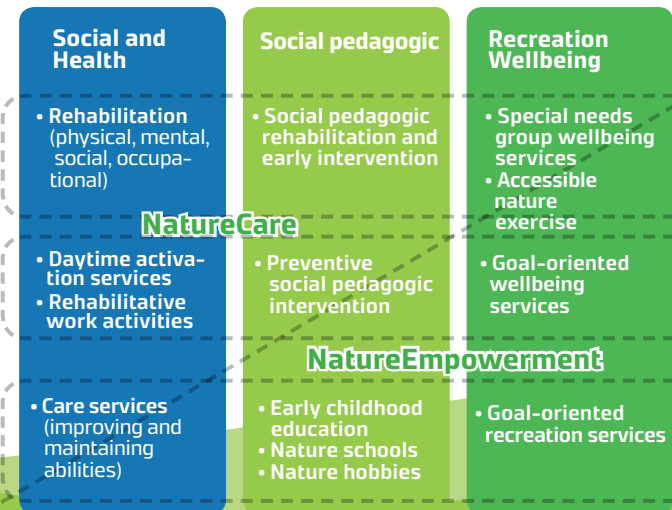
Recreation, wellbeing and education services



Social and health care services

	NATURE	ANIMAL	GARDEN	FARM
NATURECARE	 Nature-assisted therapy	 Animal-assisted therapy	 Garden therapy	 Therapy in a farm environment
NATUREEMPOWERMENT	Rehabilitation use of nature	Social-pedagogic animal-assisted activities	Social and therapeutic garden activities	Rehabilitation activities at a farm or in forestry
NATUREEMPOWERMENT	Nature-oriented pedagogics	Animal-assisted pedagogics	Pedagogic garden activities	Pedagogic activities at a farm
NATUREEMPOWERMENT	Goal and nature-oriented activities	Goal-oriented animal-assisted activities	Goal-oriented garden activities	Goal-oriented farm visits

© Luke 2017/dauni Hyvärinen/ Eina Vehmasto



## WHY IS IT EFFECTIVE?

Green Care services use a variety of interventions that are based on nature (see the image). Well-being effects are generated by the stimulating nature of the environment, the act of participation and the experience itself.

## WHAT ARE GREEN CARE LABELS?

Green Care labels indicate that the service provider is familiar with the Green Care operating method and that the service is provided in a professional, goal-oriented and responsible manner.



## A GREEN CARE LABEL INDICATES THAT...

### 🌿 **The service provider is committed to:**

- working in a customer-centred, responsible manner
- assessing the impact of the service provided in relation to the customer's needs and goals
- using a feedback system and quickly correcting any deviations in quality
- abiding by a code of ethics of their own sector and Green Care Finland ry's ethical guidelines
- familiarising themselves with all laws and statutes regarding the services and complying with them.

### 🌿 **A Green Care quality handbook is available. It describes the following:**

- The environment-based operating method of the service in relation to the service goals
- The service provider's competence
- Progress of the service process
- Implementation method of service quality management

### 🌿 **The manner in which safety of the service has been planned**

### 🌿 **The service provider has completed a theoretical training course in Green Care of at least five credits.**

## CONTENT OF THE GREEN CARE LABELS

Label managed by Green Care Finland ry  
Granted by Green Care Quality Committee  
Valid for a period of three years  
The label is service-specific

### **Documentation required for a Green Care label:**

#### Green Care quality handbook

- Comprehensive management of service quality

#### Safety plan

- Required for both NatureEmpowerment and NatureCare services
- Covers all safety issues pertaining to the service

#### Self-monitoring plan

- Required for NatureCare services

### **Expertise required for a Green Care label:**

#### I) Green Care expertise (at least 5 credits)

- Can be supplemented with work experience

#### II) Expertise required by the services

- For example, sufficient social and welfare expertise

Additional information about the quality labels:  
[www.gcf Finland.fi/laatu/](http://www.gcf Finland.fi/laatu/)

## GREEN CARE FINLAND RY [WWW.GCFINLAND.FI](http://WWW.GCFINLAND.FI)

Green Care Finland ry is an association that works throughout Finland and promotes services based on the beneficial effects of the environment. The association is an active developer of the industry providing information and participating in social discussion. It offers peer information and partners, as well as visibility for Green Care operations. Members include service providers, developers, trainers and researchers. The members have committed to the association's Code of Ethics. In return, they have the right to use the association's logo.



**GreenCare**  
FINLAND

The quality labels were created in cooperation by Green Care Finland ry and a nation-wide Green Care coordination committee managed by the Natural Resources Institute Finland. The main implementer of the quality labels is the National Institute for Welfare and Health (THL).



NATIONAL INSTITUTE  
FOR HEALTH AND WELFARE  
FINLAND



The European Agricultural Fund  
for Rural Development:  
Europe investing in rural areas

